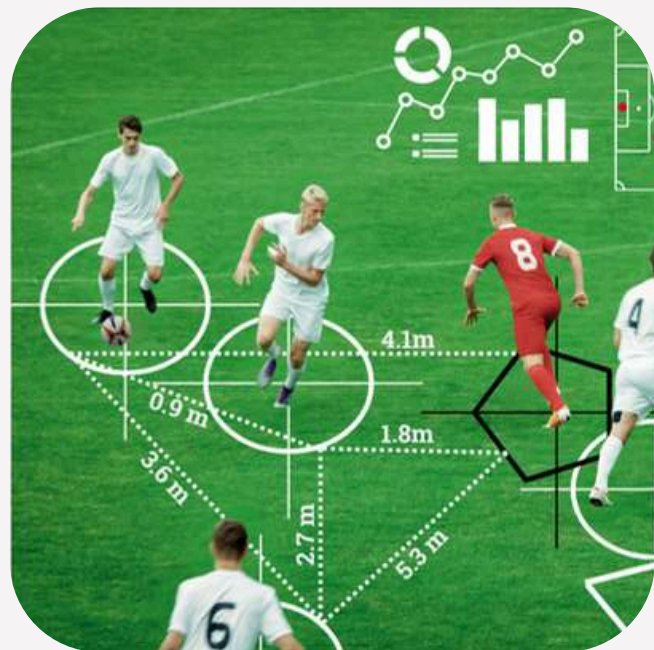
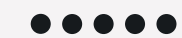


FORWARD FOOTBALL

TECH YOUR CLUB TO THE NEXT LEVEL



SINCE JULY, 2016



**FORWARD
FOOTBALL**



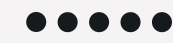
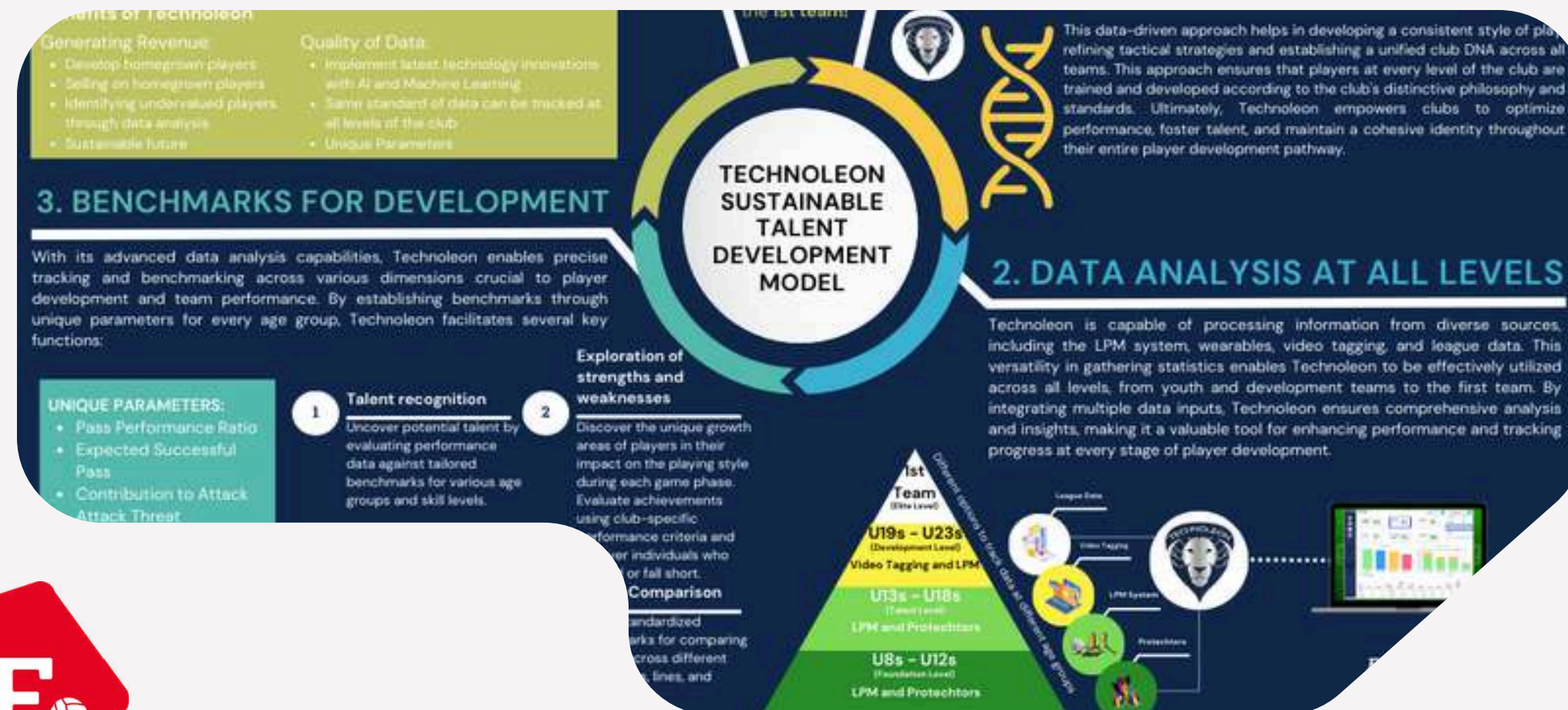
“WE IMPROVE FOOTBALL”

SUSTAINABLE TALENT DEVELOPMENT

DATA ANALYTICS AT
ALL LEVELS AND AGES

BENCHMARKS FOR
COMPARISONS

TRACKING OF
DEVELOPMENT



4. SUSTAINABLE FRAMEWORK



In essence, using Technoleon's comprehensive data analysis capabilities empowers clubs to build a sustainable future by developing players from youth, aligning them with the club's DNA, and strategically utilizing them to generate revenue through transfers. This holistic approach not only strengthens the squad but also secures the club's financial health, ensuring long-term success and competitiveness in the ever-evolving landscape of football.

Benefits of Technoleon

Generating Revenue:

- Develop homegrown players
- Selling on homegrown players
- Identifying undervalued players through data analysis
- Sustainable future

Quality of Data:

- Implement latest technology innovations with AI and Machine Learning
- Same standard of data can be tracked at all levels of the club
- Unique Parameters

3. BENCHMARKS FOR DEVELOPMENT

With its advanced data analysis capabilities, Technoleon enables precise tracking and benchmarking across various dimensions crucial to player development and team performance. By establishing benchmarks through unique parameters for every age group, Technoleon facilitates several key functions:

UNIQUE PARAMETERS:

- Pass Performance Ratio
- Expected Successful Pass
- Contribution to Attack
- Attack Threat Contribution
- Number of Out Played Opponents
- Ball Win Back Time
- Space Domination
- Block Forming
- Line Passing

1 Talent recognition
Uncover potential talent by evaluating performance data against tailored benchmarks for various age groups and skill levels.

2 Exploration of strengths and weaknesses
Discover the unique growth areas of players in their impact on the playing style during each game phase. Evaluate achievements using club-specific performance criteria and uncover individuals who exceed or fall short.

3 Tracking development
Track the growth of players over time and document their advancement towards the goals and standards established for each phase of progress.

4 Player Comparison
Utilize standardized benchmarks for comparing players across different age groups, lines, and positions.

GOAL!

Build a cutting-edge setup that **talents** adore, giving them a peek into their **true potential** and elevating their game to lead the pack as **champions of the 1st team!**



This data-driven approach helps in developing a consistent style of play, refining tactical strategies and establishing a unified club DNA across all teams. This approach ensures that players at every level of the club are trained and developed according to the club's distinctive philosophy and standards. Ultimately, Technoleon empowers clubs to optimize performance, foster talent, and maintain a cohesive identity throughout their entire player development pathway.

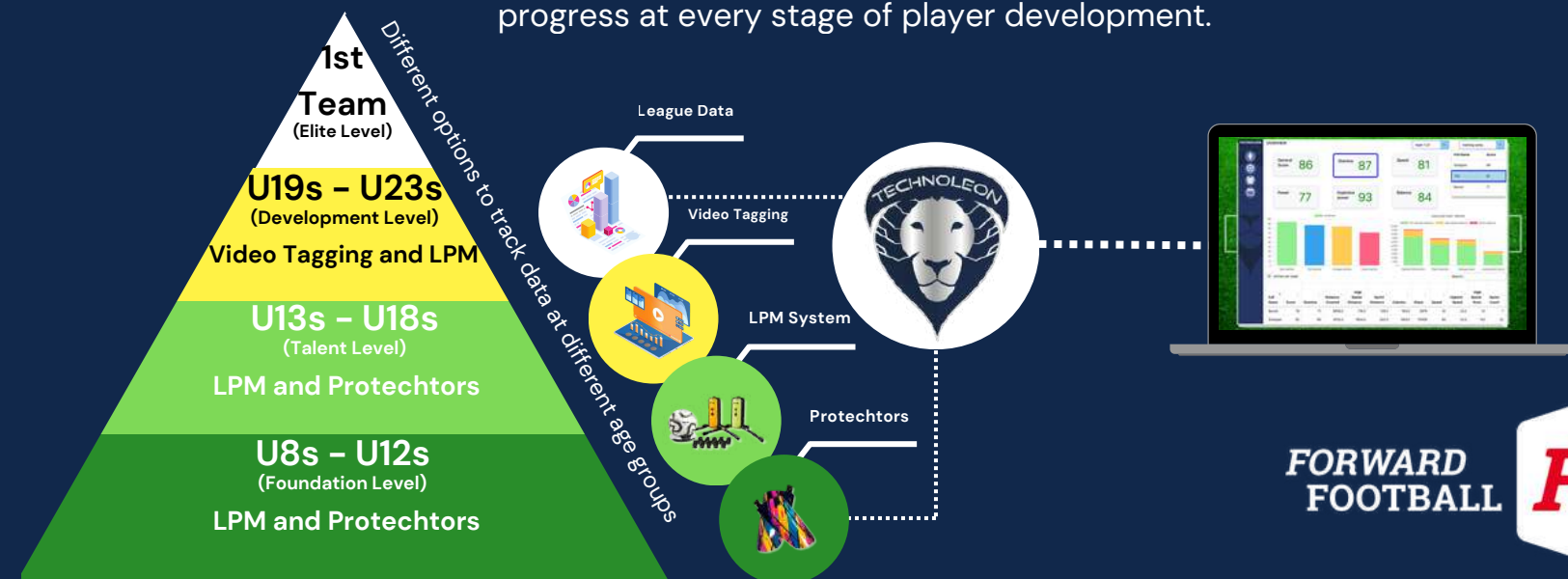
1. INTRODUCTION OF TECHNOLEON

Technoleon provides detailed benchmarks for every age group, aiding in the identification of talent, assessment of current player abilities, and pinpointing of weaknesses. It facilitates tracking player development by collecting data across all five phases of the game: defense, attack, transition from attack to defense, transition from defense to attack, and physical performance. Driven by **AI** and **Machine Learning**, Technoleon offers access to unique and powerful parameters that assess players based on their contribution to the club's style of play.

TECHNOLEON SUSTAINABLE TALENT DEVELOPMENT

2. DATA ANALYSIS AT ALL LEVELS

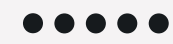
Technoleon is capable of processing information from diverse sources, including the LPM system, wearables, video tagging, and league data. This versatility in gathering statistics enables Technoleon to be effectively utilized across all levels, from youth and development teams to the first team. By integrating multiple data inputs, Technoleon ensures comprehensive analysis and insights, making it a valuable tool for enhancing performance and tracking progress at every stage of player development.



FORWARD FOOTBALL



PORTFOLIO



Products & Services

AIRTLS LPM



RESEARCH PROJECTS



(ON FIELD) SKILLS TESTS



LEAGUE DATA



VIDEO TAGGING ANALYSIS



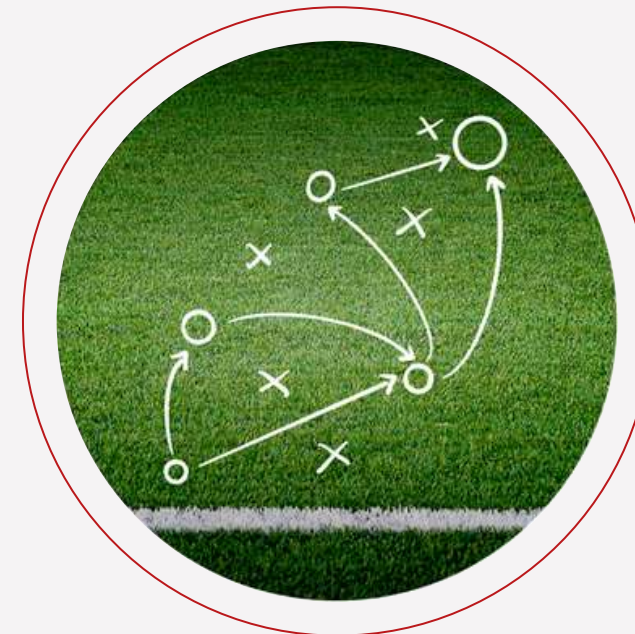
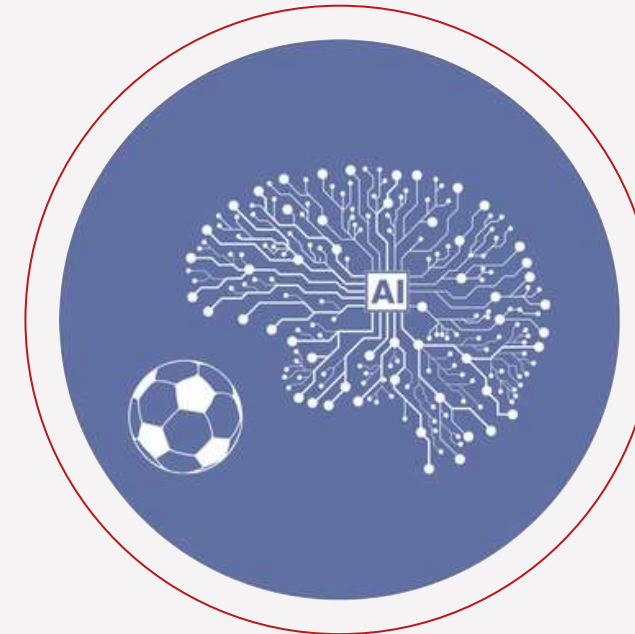
PROTECHTORS & TECH.FOOTBALL

Data intelligence

TECHNOLEON



AI PREDICTION MODELS



CUSTOMISED DATA MODELS



OUR EXPERIENCE

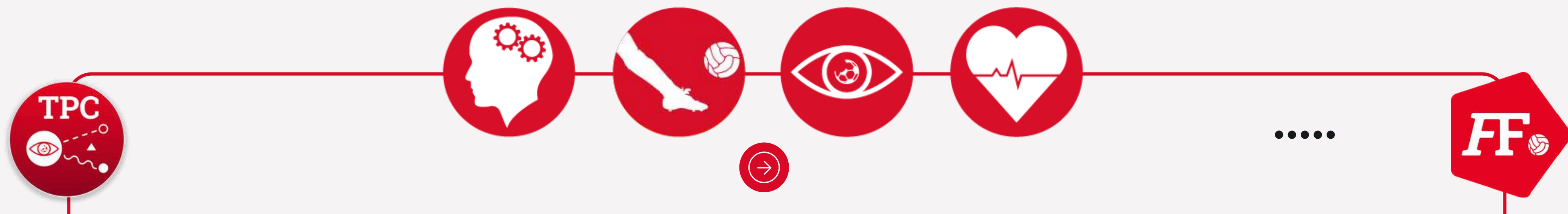
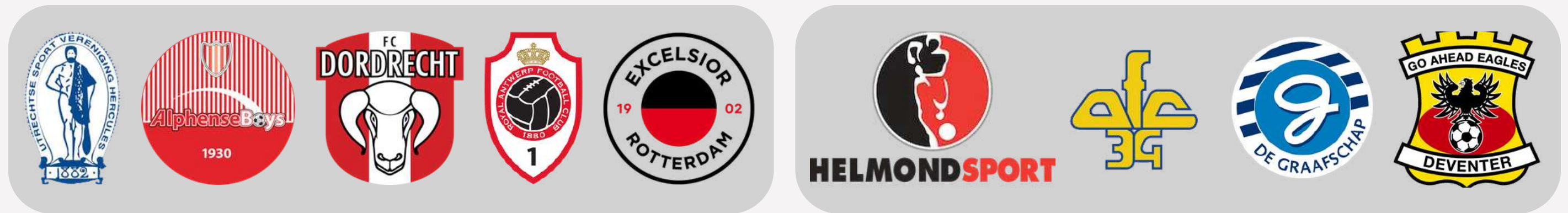
RESEARCH PROJECTS

LEASE-AGREEMENTS

BUY OR RENT-TO-OWN

CONSULTING

PROJECT BASED



TECHNOLEON



NEXT LEVEL
SPORTS DATA INTELLIGENCE

ALL-IN-ONE DATA INTEGRATION FOR ADVANCED PERFORMANCE ANALYSIS

KEY FEATURES

DATA PROCESSING

DATA HANDLING & STORAGE

TEAM PERFORMANCE

INDIVIDUAL CONTRIBUTION

MATCH

DEVELOPMENT

COMPARE

THE GOAL IS LONG-
TERM SUCCESS ON
AND OFF THE FIELD.

LEAGUE DATA



AIRTLS LPM



SKILLS TEST



SPORTS.TECH



RESEARCH
PROJECTS



VIDEO TAGGING



DATA



.....



INDIVIDUAL PERFORMANCE

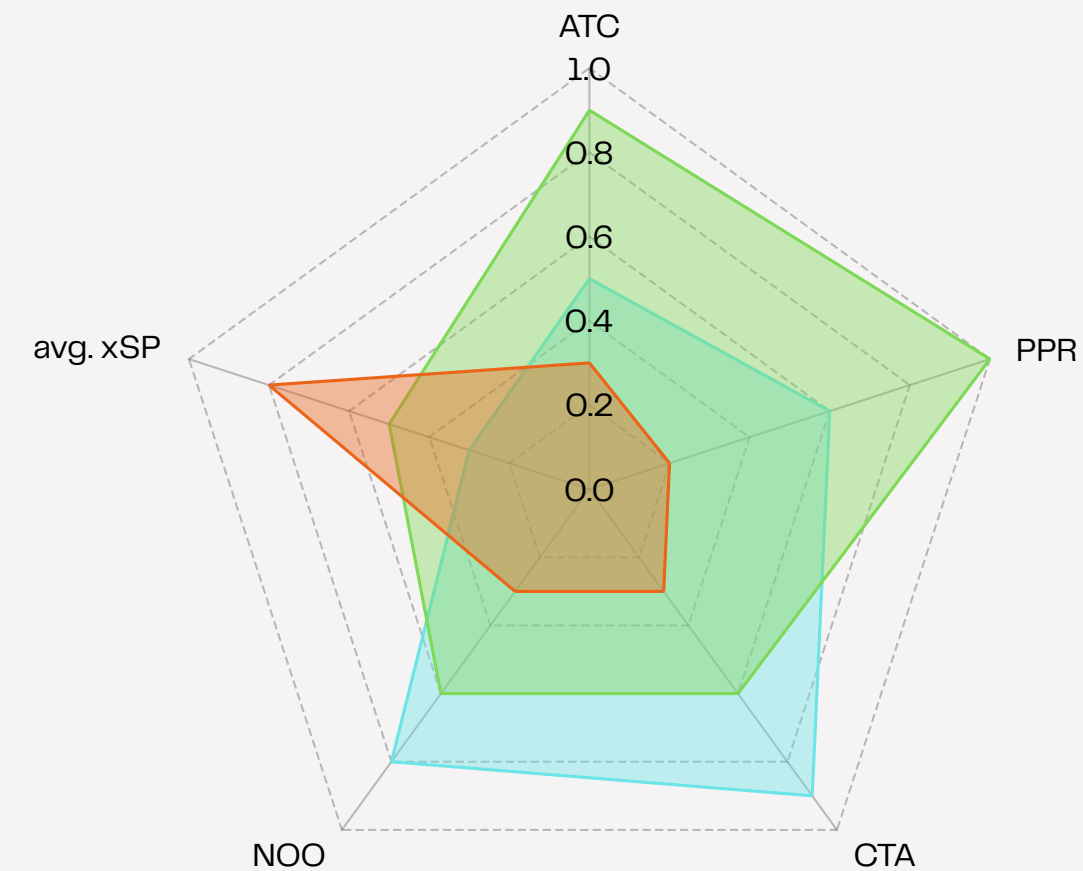
Monitor match performance, development over time and compare players to each other or benchmarks

MOTIVATION & GOAL SETTING

Give players responsibility on their own development

STRATEGIC TRAINING PROGRAMS

Taylor your training to improve your weaknesses



TEAM PERFORMANCE

Analyze your team's performance

SELECTION & RECRUITMENT

Make objective data-driven decisions

.....



DATA

We use machine learning models to:

- Categorize Events
- Group Data Points (Clustering)
- Predict Success Rates of Events (e.g. xSP - Expected Successful Pass)



Passes



- Distance, direction & pressure
- Expected Successful Pass (xSP)
- Added Threat
- # Opponents Outpassed
- Contribution to attack

Shots



- On target
- Outside/inside box
- Spin of the ball
- Speed of the ball

Dribbles



- Distance, speed & direction
- Added threat
- # Opponents Outdribbled
- Contribution to attack

Space control



- Team Compactness
- Mutual distances
- Team dominance of spaces
- Block formation & pressure

Defence



- # Interceptions
- Ball Win Back Time
- Interception location
- Action after ball win

Physical



- Distances
- Speeds
- Accelerations
- Heart rate (optional HR-Band)

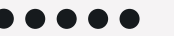
Others



- Box entries
- Attacking 3rd entries
- Customized parameters based on club's style of play



PITCH APPLICATION



ALL-IN-ONE

DATA INTEGRATION FOR ADVANCED ON-FIELD ANALYSIS

KEY FEATURES

ADVANCED PLAYER, ACTION & PATTERN FILTER

3D VIEW OF ACTIONS & SITUATIONS

AUTOMATIC BALL TRACKING SETTING

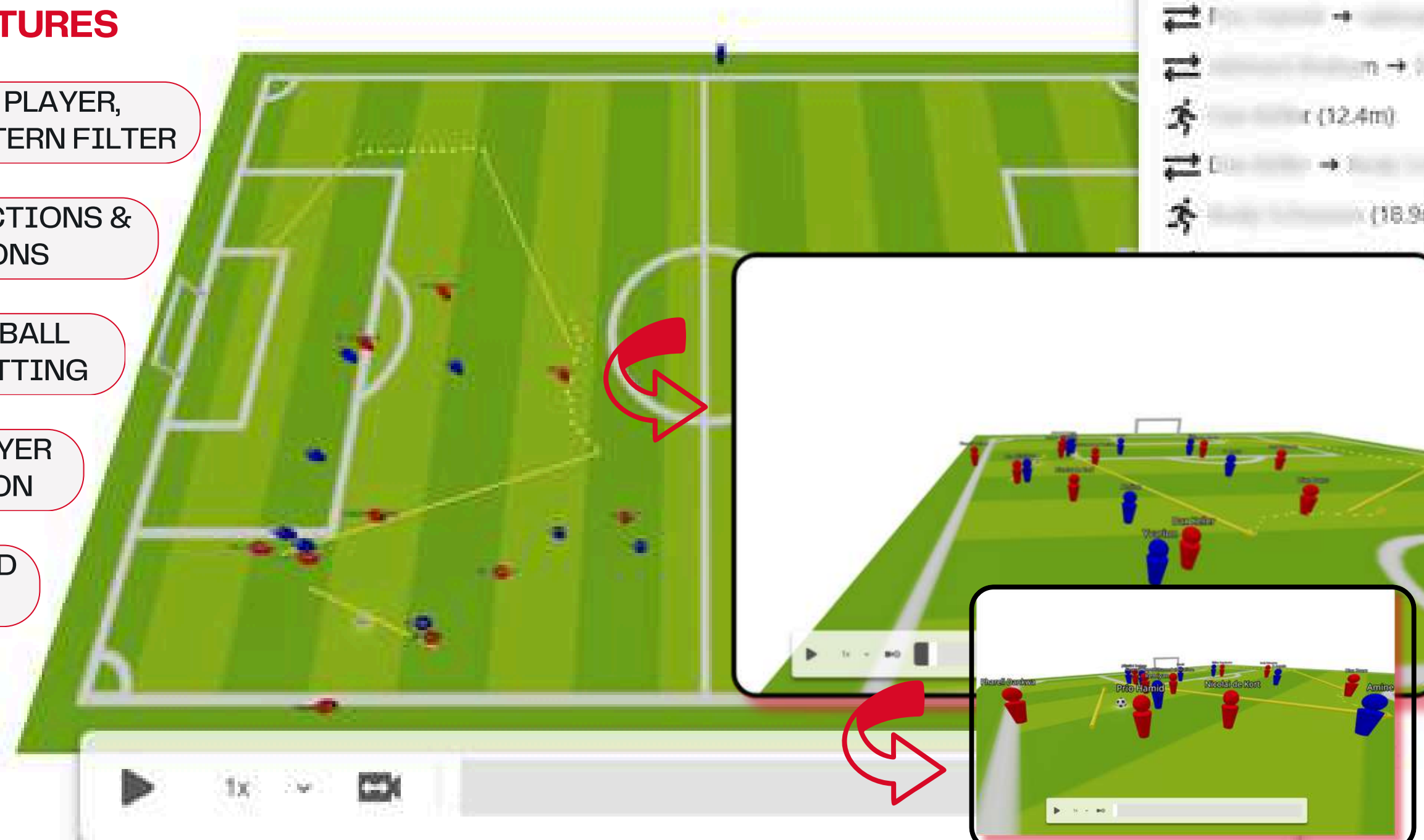
REPLAY OF PLAYER & BALL MOTION

360° FULL-FIELD ROTATION

Snake

19:48 - 20:08
Number of events: 8

- → → → → → → →
- → → → → → → →
- → → → → → → → (12.4m)
- → → → → → → →
- → → → → → → → (18.9m)



LOCAL POSITINING MEASUREMENT

- SMART BALL
- ANTENNAS (FIXED OR MOBILE)
- WEARABLE PLAYER TRACKERS

INCLUDING HEIGHT-COORDINATES!!!

IT COLLECTS

- POSITIONAL DATA
- PHYSICAL METRICS
- MOTION SENSOR DATA
- KEY EVENTS

OUTPERFORMING ANY LPM SYSTEM

- UP TO 2.800HZ NETWORK CAPACITY
- BALL TRACKING AT 175HZ
- PLAYER POSITION TRACKING AT 50HZ
- MOTION SENSOR TRACKING AT 50HZ

•••••

- **Each player wears a lightweight tracker** – capturing precise position data
- **Smart ball technology** – a football with inbuilt sensors that measure position, trajectory, spin and motion
- **Real-time player & ball tracking** – providing live data such as live positions, total distance, and team shape
- **Comprehensive post-match analysis** – advanced performance metrics, tactical insights, and customised data models
- **High accuracy** – high bandwidth and frequency of the system enables up to cm precision tracking data

AIRTLS LPM

The most high-quality and accurate **player and ball** performance tracking system available.



GET

AUTOMATED VIDEOCLIPS

PLAYER REPORTS

TEAM REPORTS

DEVELOPMENT MODULE

MATCH MODULE

COMPARE MODULE

VIDEO TAGGING

**USE ANY CAMERA
THAT OFFERS
SUFFICIENT QUALITY**

**AI-DRIVEN AUTO
EVENT DETECTION**

**MANUAL TAGGING IS
NO LONGER REQUIRED.**

**SIMPLY UPLOAD
THE MATCH AND
WAIT**



LEAGUE DATA

GET

AUTOMATED VIDEOCLIPS

PLAYER REPORTS

TEAM REPORTS

DEVELOPMENT MODULE

MATCH MODULE

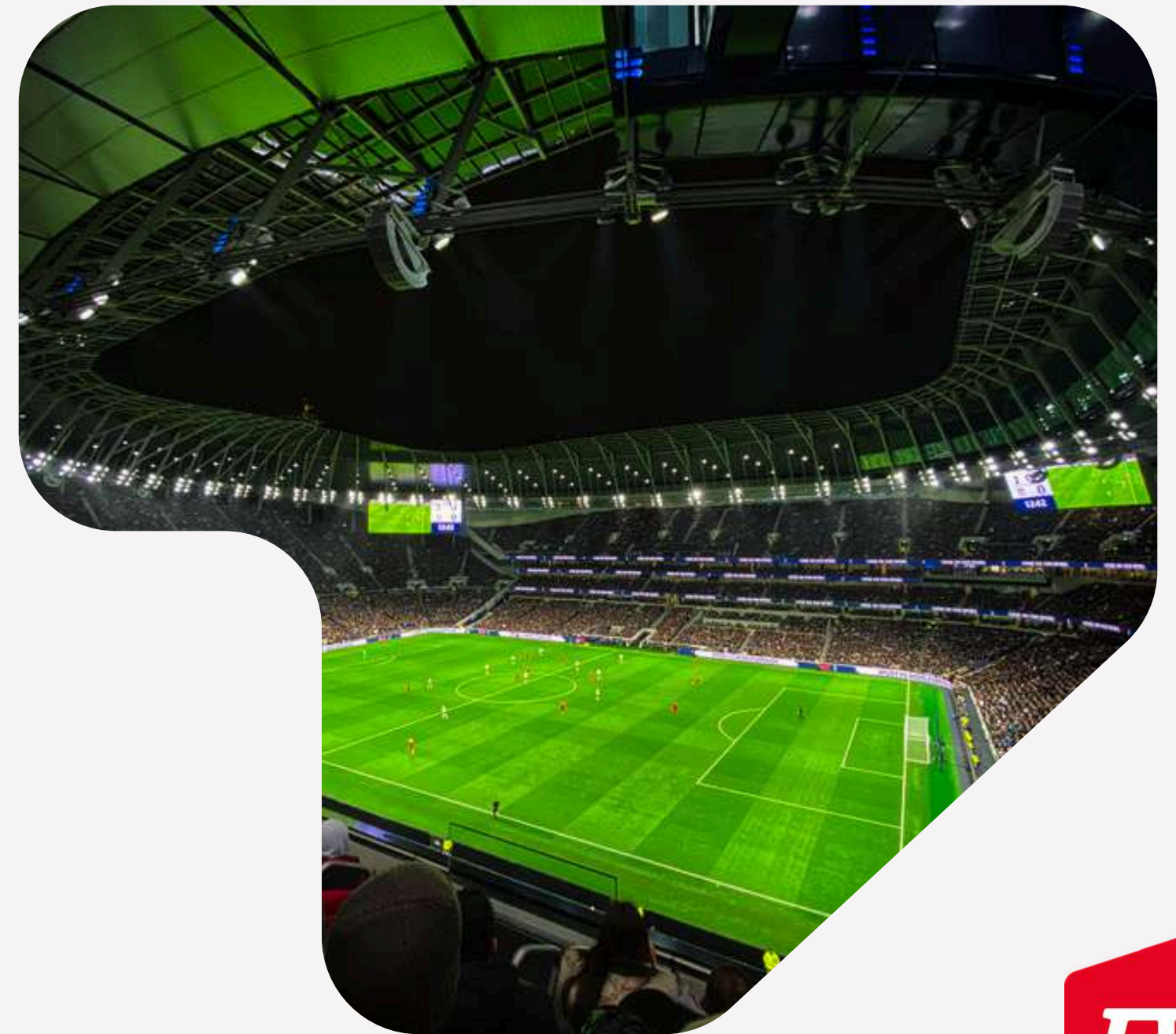
COMPARE MODULE

PLAY STYLE SPECIFIC
ANALYSIS

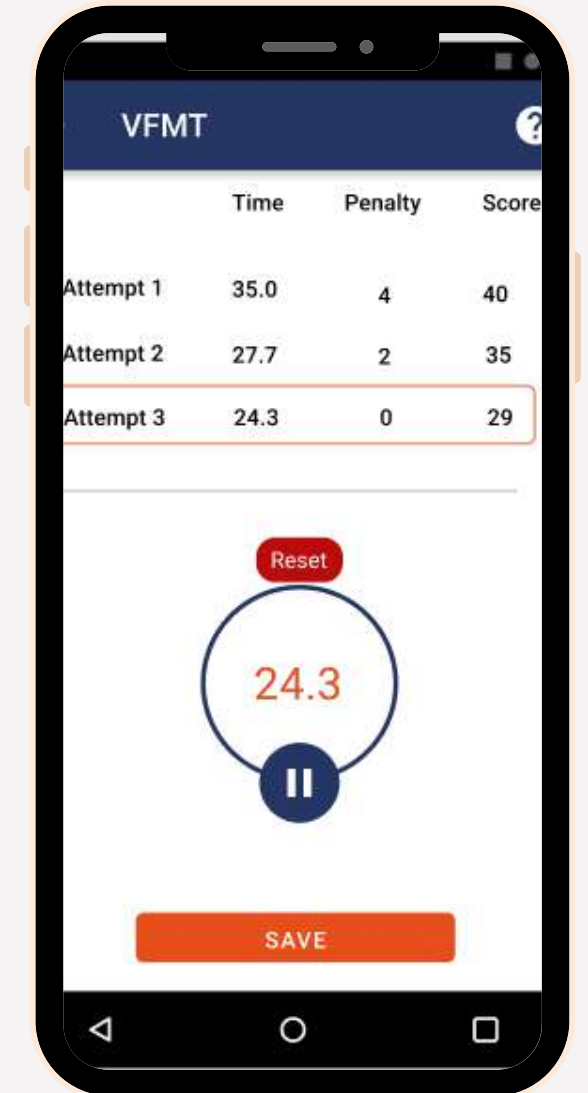
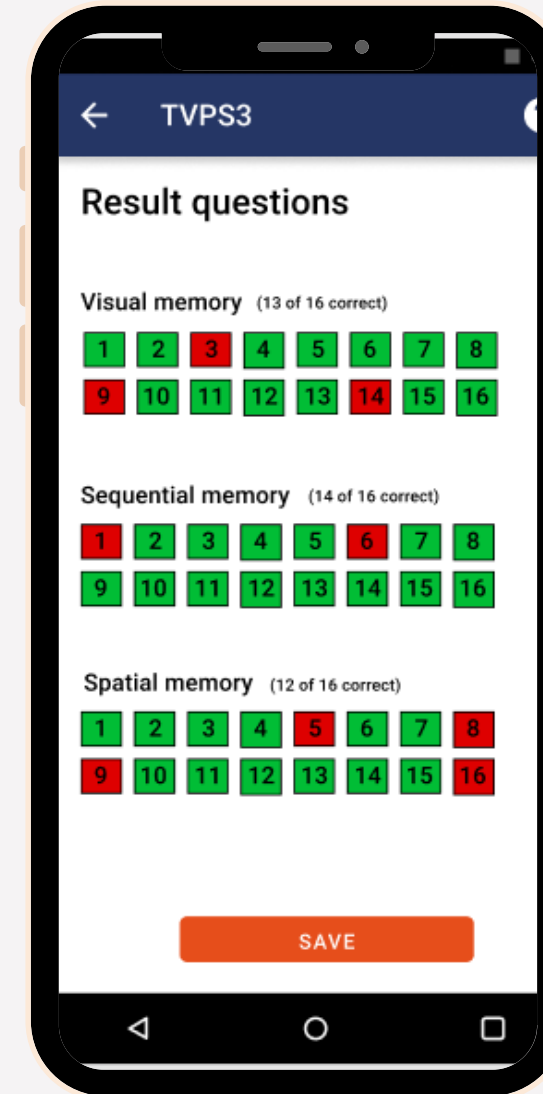
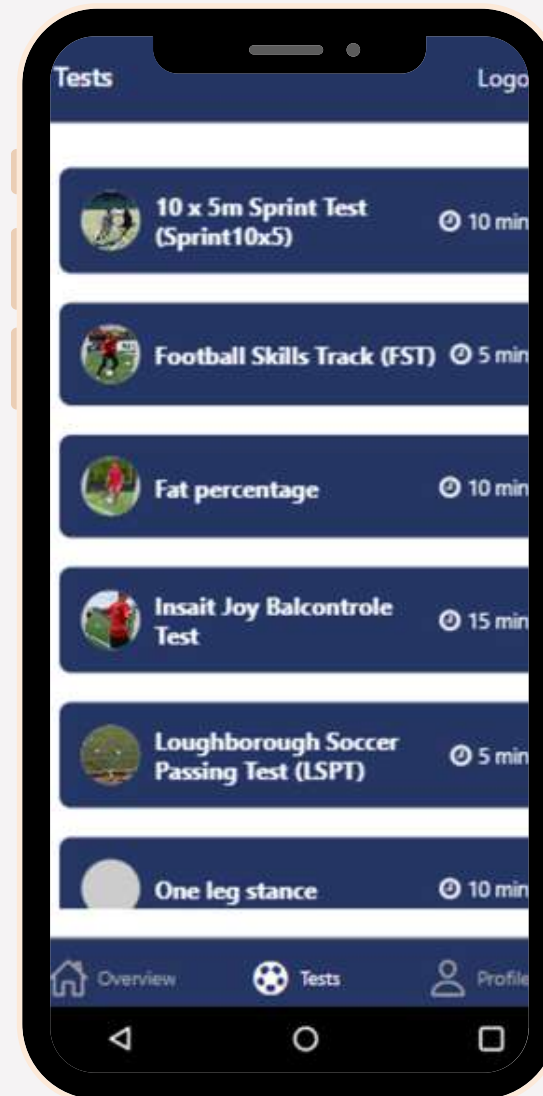
CUSTOMISED DATA
MODELS

READY TO GO
DASHBOARDS

INTEGRATION OF
MUTLIPE DATA
SOURCES



SKILLS TESTS



TECHNICAL

PHYSICAL

COGNITIVE

MENTAL





**DOWNLOAD THE
MOBILE APP**
and improve your
performance



**TRAIN ANYWHERE
AND ANYTIME**

PROTECHTORS & TECH.FOOTBALL

Perform skill exercises with
the **tech.football**

Wear the **protechtors** during
matches and training sessions!

Protechtors measure stamina,
speed, explosivity, left-right
balance and shotpower

**COACHES ALWAYS
HAVE ACCES TO
THEIR PLAYERS
PERFORMANCES**



....

QUESTIONS & ADDITIONAL INFORMATION



VISIT OUR WEBSITE

WWW.FORWARD.FOOTBALL

FIND DEMO'S AT

WWW.FORWARD.FOOTBALL/TECHNOLEON

YOU CAN ALSO REACH US BY EMAIL AT

INFO@FORWARD.FOOTBALL

....

**FORWARD
FOOTBALL**

